

# TL3.6PH-H

## 3.6 Ton 4 Post Parking Hoist - Extra High



» 3.6 Ton lifting capacity

» Double your parking space

» Diamond plated platforms

» Single point lock release

» Extra height for storing taller vehicles

» Mechanically locks each (170mm) interval

» Anti-surge valve

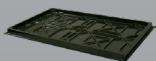
» Slack / loose cable safety locks

» Durable charcoal Hammertone powder coat finish

» 5 Year structural, 1 year electrical, parts & labour warranty

» Certified to Australian Standards and design registered with Worksafe

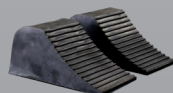
### INCLUSIONS



Drip Trays



Wheel Stops



Wheel Chocks



Hydraulic Oil



Caster Kit

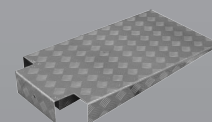


Steel Tool Tray

### OPTIONS

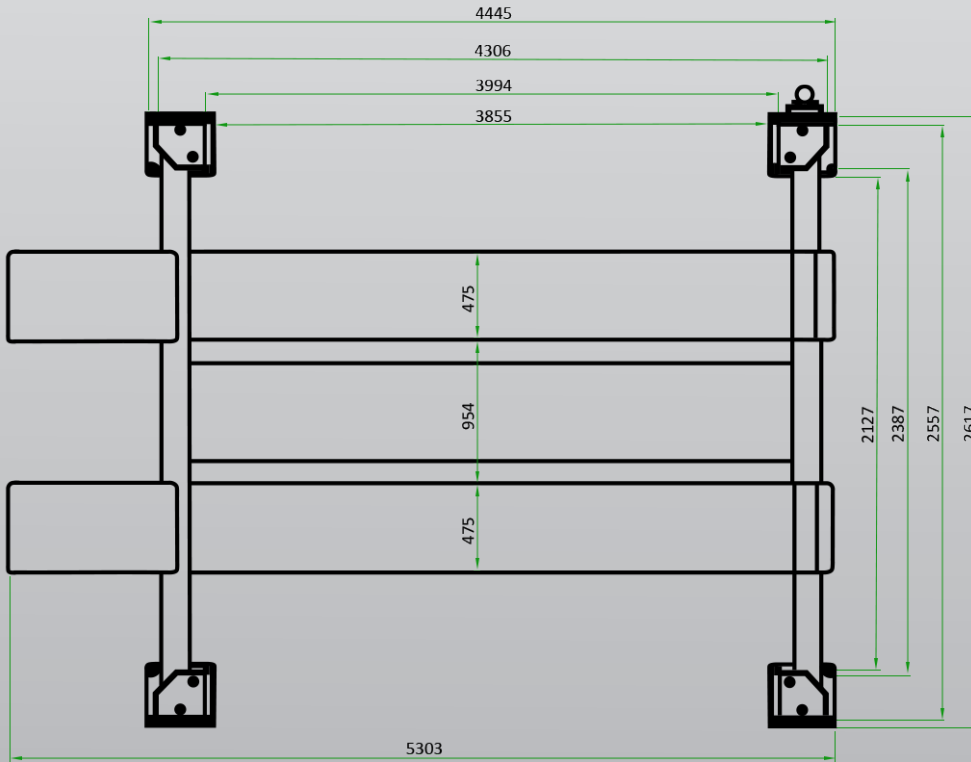


RJ35 Manual Sliding Jack



Aluminium Approach Ramps

# TL3.6PH-H



### Minimum Concrete Requirement

100mm

### Recommended Ceiling Height

3.7m

### Power Requirements

240v

2.2kw 14.5 amps

### Freight Dimensions

428 x 57 x 76cm

775kg

